

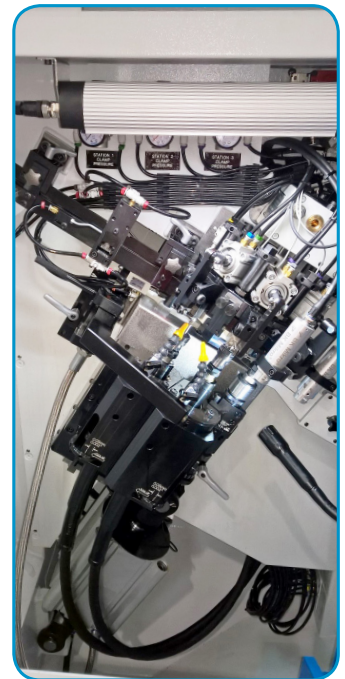
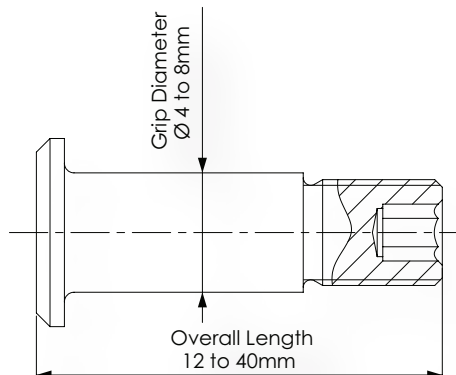
## Key Points

- Drilling, Pointing, Facing and Broaching of Aerospace Fasteners
- A fast, flexible, reliable machine specially designed for the job
- 800 – 1400 parts per hour depending on size
- Fast changeover
- Safe, clean working and easy maintenance
- 35 E-Tech Drill / Broach machines running on customers' sites

## Features

- 18" dia Vibratory Bowl Feeder
- Indexing Disk with locations to suit 5 different diameters (Indexing Disks can easily be changed)
- 5 stations:
  1. Load
  2. Center Drill / Point & Face
  3. Drill
  4. Broach Hex
  5. Unload
- 2 Rotating spindles with independent variable speed up to 6000 rpm
- Hydraulic Feed-rate Control
- Quick-change pre-settable tooling
- Allen Bradley or Siemens PLC control system with 6" touch-screen (HMI)
- Automatic tool breakage detectors

## Size Range



V1/1016

**Earlsdon Technology Ltd**  
Unit 11, Spitfire Close, Coventry, CV5 6UR, Angleterre  
Tél. : +44 (0) 24 7671 7023  
sales@e-tech.co.uk | www.e-tech.co.uk



sales@truformequipment.com | www.truformequipment.com

**Truform Equipment Inc.**

14744 S. McKinley Avenue, Posen, IL 60469

T: 708-897-8595 F: 708-897-8591