



**SCREW END**

# HIGH SPEED BOLT POINTER HC-P14





MADE IN TAIWAN

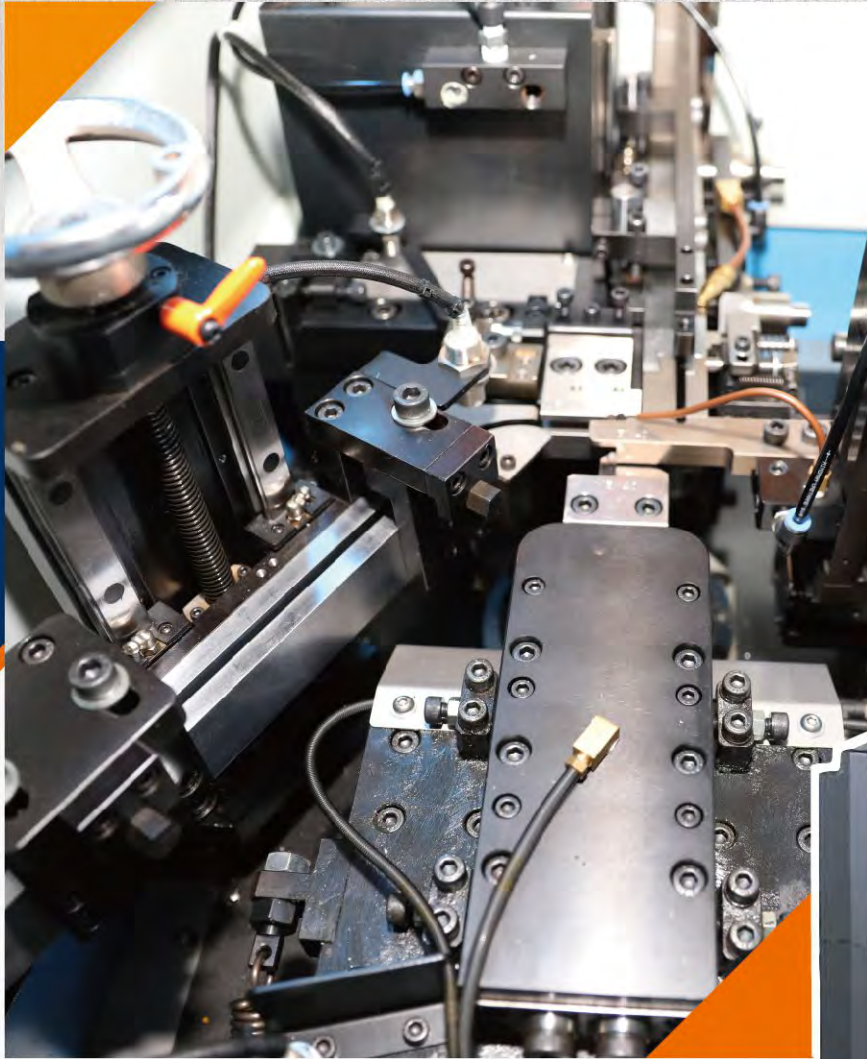
# HC-P14



Standard Equipment	Specification	Remark
Machine Capacity	Ø3mm~Ø15mm/L:12mm~150mm	
Production Speed (pcs/min)	0~150 PIECES	
Spindle Travel Axis/ Cutting Travel Axis	15/5 (20/10)	
Spindle Speed (rpm)	1,000~6,000	
Spindle Motor (Servo)	7.5HP (5.5KW)	
Cutting Tool	Pointing, Chamfering and Facing Cutting Holder/Drilling Spindle Holder	
Standard Accessory	Vibrating Feeder	
Chip Conveyor	Chain Type	
Machine Size	L 2300xW 2100xH 2050mm / Weight 1800kg	



# POWERED BY SERVO MOTORS FOR PRODUCTION STABILITY



Feeding Servo 2.0KW  
(Delta)

Inverter Control  
VFD-CH2000 (Delta)



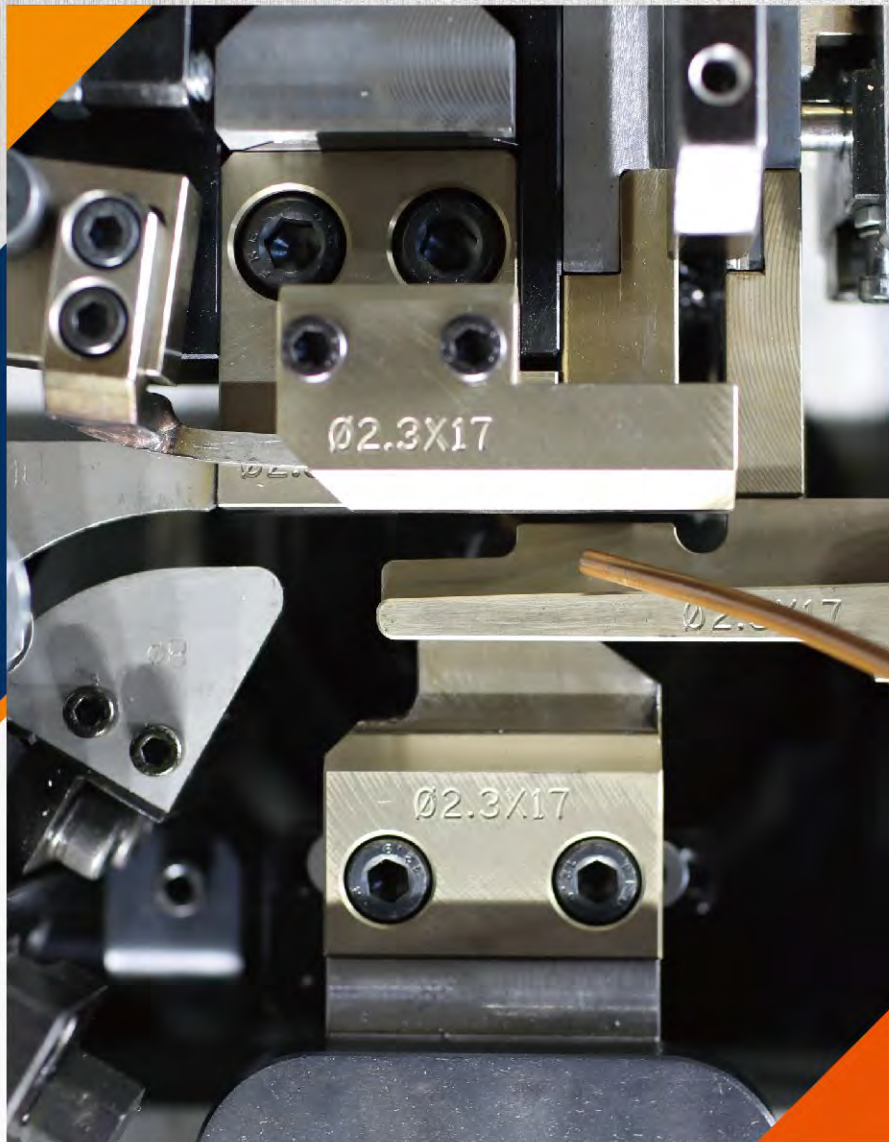
Jig Servo 2.0KW  
(Delta)



Main Spindle AC Induction  
Servo Motor 5.5KW (FUKUTA)



# QUICK CHANGE TOOLS



## Jig Exchangeable

1. Modularization with Quick-Change Option.
2. Higher Accuracy.

Benchmark  
Mold



Bolts Head  
Confine



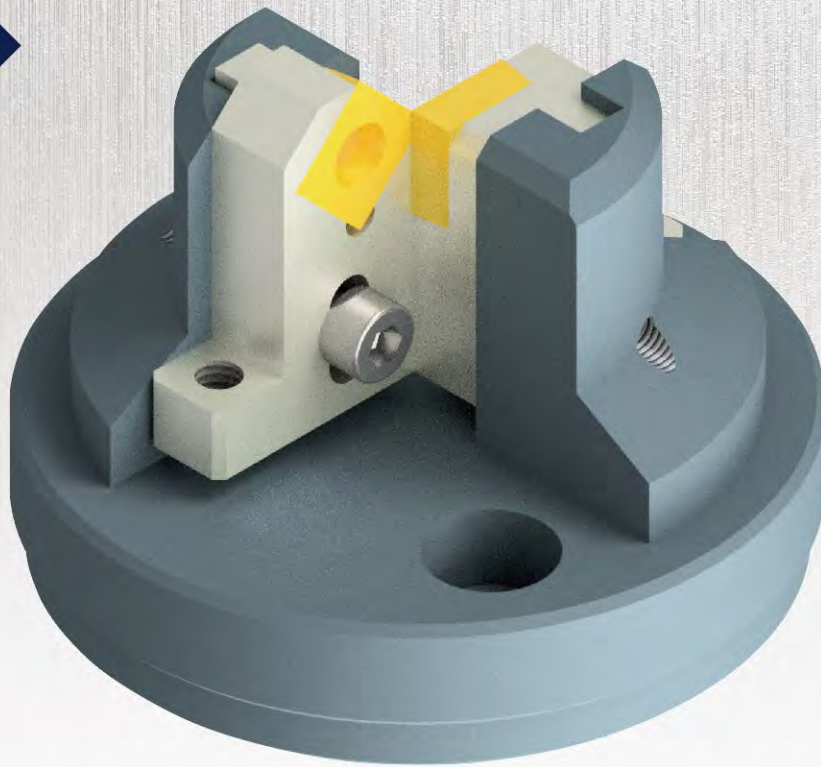
Press Plate



Feeding  
Pusher

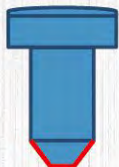


# TOOL SET VARIETY

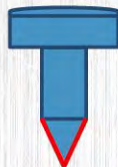


Special tool holder for ISO inserts.  
Wide application for various types of bolts/screws end cutting requirements.

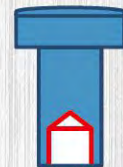
■ Chamfering + Facing



■ Pointing

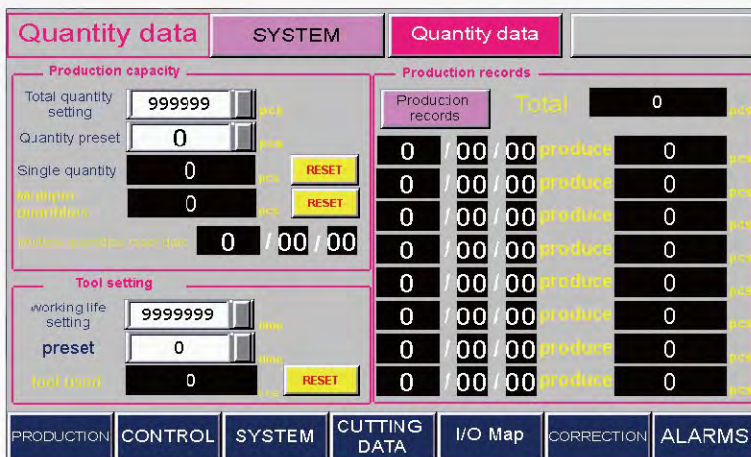
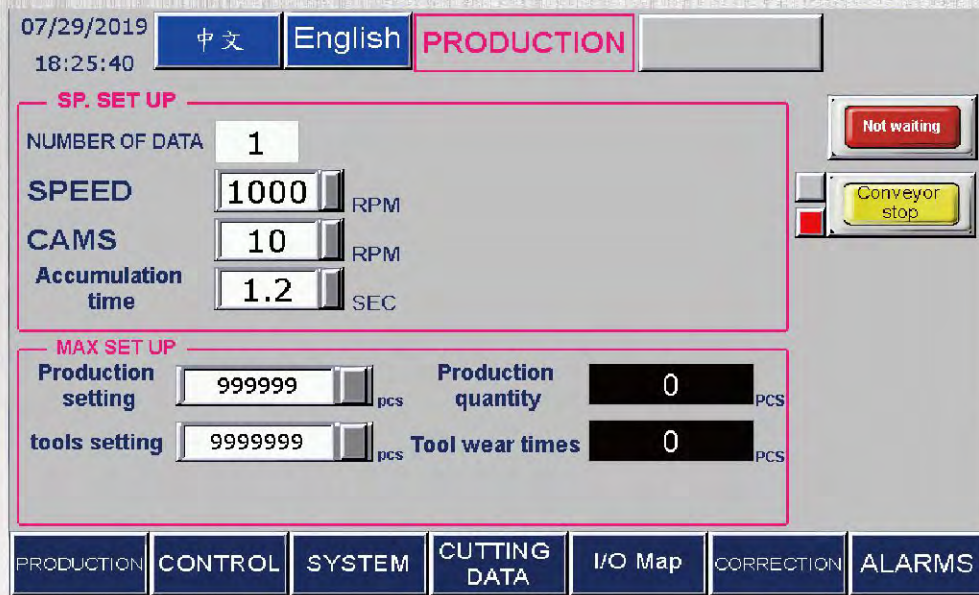


■ Drilling





# 10.1" HMI CONTROL

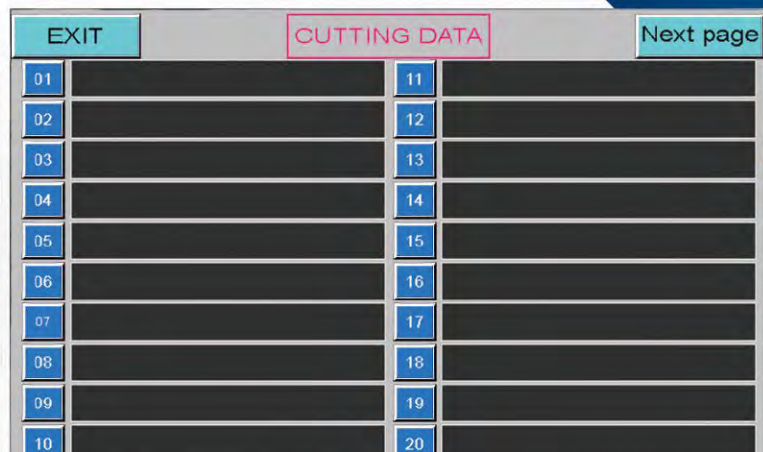


Complete Production Record.

Daily Production,  
Batch Production,  
Tool Life Records.

Cutting process programs can be stored in the database.

Easy recall for different cutting processes.





# SYNCHRONIZED LUBRICATION SYSTEM



## ■ Spindle Micro-lubrication

1. Ensure high speed & longer spindle life.

## Auto Lubrication System ■

1. Programmable time operation.

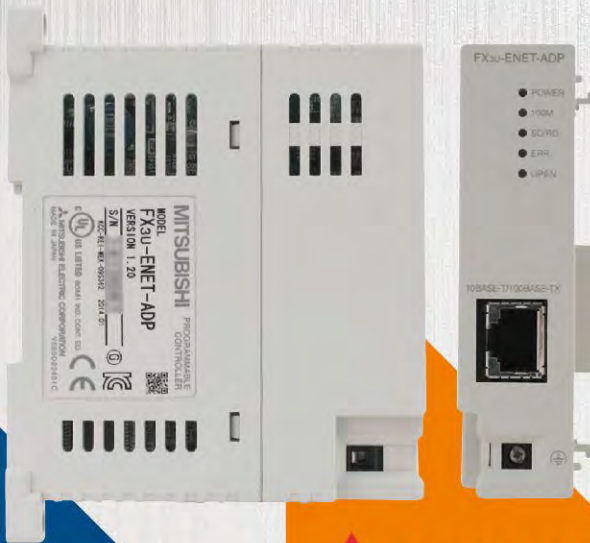


## ■ MQL (OPTIONAL)

1. Reduce the cleaning process.
2. High cooling & lubrication efficiency.
3. Improve tool life.



# LAN OUTPUT FOR DATA TRANSFER



RJ-45

Daily Production Data

Cutting Parameters

Tool Life Management



## SCRAP CONVEYOR

### Chain Type Conveyor

Effective removal of small and thin scraps.



**TruformEquipment** Inc.

14744 S. McKinley Ave  
Posen, IL 60469

PH: (708) 897-8595 / FX: (708) 897-8591

Sales@TruformEquipment.com

